



#GOBEARSGO

KUTZTOWN

WOMEN'S LACROSSE

2016 MEDIA GUIDE

1866 2016
KUTZTOWN
UNIVERSITY
Celebrating
150
YEARS

Facts about Kutztown University

ENROLLMENT

There are currently 9,218 full- and part-time undergraduate and graduate students from 20 states and nations. Most are Pennsylvania residents: 58% women, 42% men.

SPECIAL ACADEMIC PROGRAMS

Honors Program throughout the undergraduate curriculum, international exchange, study abroad and study away programs, freshmen seminars, independent study, internships, and diversified academic support services.

FACULTY

Teaching-focused, with scholarly expertise; many are engaged in research, writing, and consulting. 87% have their doctorate or terminal degree. We have a student/faculty ratio of 20:1.

LIBRARY

A modern, spacious facility with wireless Internet access throughout the building; more than 400,000 books and bound periodicals; 74,000 print and electronic periodical subscriptions; 139 databases providing access to hundreds of thousands of e-books, documents, reports, and images; more than one million microforms; maps, videos and DVDs; state-of-the-art computer facilities; study rooms.

SPECIAL FACILITIES

Wireless campus with galleries and studios, planetarium, observatory, TV production facilities, radio station, 50 computer labs containing 1,800 PCs/Macs for student-use, smart classrooms, curriculum materials center, Ronald R. Rhein Environmental Study Area, Pennsylvania German Cultural Heritage Center, Wallops Island marine science consortium facility in Virginia.

STUDENT LIFE

The McFarland Student Union serves as the campus living room, with a movie theatre, computer lab, multiple lounges, coffee bar, a dining area and campus information center. More than 160 student organizations: academic, campus media, diversified interest, Greek, performing arts, public service, residency issues, spiritual, special interest, sports (intramural and club programs), visual arts affiliates; plus musical entertainment, dances, lectures, comedy, excursions and cultural events are available. Additionally, the student recreation center houses a rock climbing wall and provides fitness programs, racquetball courts, gymnasiums, fitness equipment and juice bar.

HOUSING AND RESIDENTIAL SERVICES

12 residence facilities (nine coed and three modified coed) that include three apartment-style, two suite-style and seven traditional; accommodate 4,200 students. All residence halls are wired for cable TV, local telephone, Internet and campus network access.

ATHLETICS

Eight men's intercollegiate sports (baseball, basketball, cross country, football, tennis, indoor and outdoor track & field, and wrestling) and 13 women's sports (basketball, cross country, field hockey, golf, soccer, softball, swimming, tennis, indoor and outdoor track & field, volleyball, lacrosse, and bowling); athletic facilities include swimming pool, football stadium, fieldhouse, weight room, playing fields, tennis and basketball courts, indoor and outdoor track, cross-country course. Member NCAA Division II, PSAC.

FINANCIAL AID

Approximately 80% of students receive financial aid in the form of scholarships, grants, loans, or student employment.

In accordance with the Equity in Athletics Disclosure Act of 1994 (section 360B of Pub. L. 130-382), the Kutztown University Athletic Department has made information concerning its intercollegiate athletics programs available to the public. This information is on file at Rohrbach Library and the athletic department main office. Questions can be directed to the athletics office, (610) 683-4094. Kutztown University is committed to Affirmative Action, equal employment and educational opportunity in compliance with Title VI and VII of the Civil Rights Act of 1964, Executive Order 11246, the Educational Amendments under Title IX of 1972, Sections 503/504 of the Rehabilitation Act of 1973, and the Americans with Disabilities Act of 1990.

MEDIA INFORMATION

All media inquiries for Kutztown University athletics, its coaches and student-athletes, are to be directed to the Golden Bear Sports Information Office. Media inquiries include all requests for sports information file photographs, photo shoots and interviews (either by phone, e-mail, in-person or otherwise) at all times, including during the active playing season, pre- and post-seasons, as well as during and outside of practices. Sports Information will provide information on game credentials, photo and film credentials, radio, television and scouting. Sports Information reserves the right to refuse or alter media requests, especially those that conflict with practices, games, travel, classes or other team/university activities. Approved requests will be fulfilled at a time that is mutually convenient for all parties.

The Sports Information staff manages press row during home games and provides complete statistics for members of the working media. Press row seating passes and credentials must be requested at least 24 hours in advance of each contest. Members of the media will receive priority seating. The KU Sports Information Office is located in the university's University Relations Department, room 303, Schock Education House.

This media guide was designed, written and edited by Sports Information Director Bryan Salvatore and graduate assistant Cody Snyder. Photos for this publication appear courtesy of David Johnson, Jeff Uleau and Jeff Unger. Some photos from University Archives. Bryan Salvatore can be contacted at salvadore@kutztown.edu or (610) 683-4182.



TABLE OF CONTENTS

About Kutztown University	IFC
President Dr. Kenneth S. Hawkinson	2
Athletics Staff	3
KU Facilities	4
Coaching Staff	7
2016 Season Outlook	9
2016 Golden Bears	13
2015 Season Review & Statistics	24
Golden Bear History	27
Kutztown's Award-Winning Campus	33
2016 Schedule	BC

SCHOOL INFORMATION

Name of School: Kutztown University | **Location:** Kutztown, Pa.
Enrollment: 9,218 | **Colors:** Maroon & Gold
Affiliation: NCAA Division II
Conference: Pennsylvania State Athletic Conference (PSAC)
Field: Keystone Field
President: Dr. Kenneth S. Hawkinson
Athletic Director: Greg Bamberger
Associate Athletic Director: Michelle Gober
Athletics Phone: (610) 683-4094 | **Athletics Fax:** (610) 683-1379

LACROSSE INFORMATION

2015 Record: 1-15 (0-12 PSAC)
First Year of Lacrosse: 1975
PSAC Championships: 1 (1982)

COACHING STAFF

Head Coach: Kate Scattergood
Alma Mater: Shippensburg '98
Years at School: 4th
Record at Kutztown: 8-41 (.163) / 3 Years
Overall Record: 85-102 (.455) / 12 Years
Assistant Coach: Melissa Furey
Years at School: 3rd



President Dr. Kenneth S. Hawkinson



DR. KENNETH S. HAWKINSON began his presidential tenure at Kutztown University of Pennsylvania on July 1, 2015.

Dr. Hawkinson came to Kutztown from Western Illinois University, where he most recently served as provost from 2012-15. He was hired there in 1988 as an assistant professor in the Department of Communication. He also is a former military officer, having served in the U.S. Army as both an infantry officer and a public affairs officer.

As provost at Western Illinois, Dr. Hawkinson was responsible for areas including university planning, fiscal and enrollment management, curriculum and contract negotiations. He implemented significant changes to the university's First Year Experience program, which resulted in a nearly 10 percent increase in the fall-to-spring retention rate. He met weekly with the Faculty Senate and other faculty governance bodies, as well as with departments, other campus groups and student government, and participated in "town hall" meetings at the college and university levels.

Dr. Hawkinson earned his bachelor's degree in history from Western Illinois. He also has a Master of Arts in speech communication from the institution and a Ph.D. in speech communication/performance studies from Southern Illinois University. He was a Fulbright scholar from 1990-91, during which he taught American studies at the University of Ouagadougou, Burkina Faso, in West Africa, and conducted research in African folklore and oral tradition. He also served for two years as a volunteer in the Peace Corps in Mali.

Prior to his appointment as provost at Western Illinois, Dr. Hawkinson served the university for four years as associate provost and associate vice president for budget, planning and personnel, where he oversaw all aspects of academic affairs, including contract administration, summer session and curriculum. Previously, he was associate dean of the College of Fine Arts and Communication and chair of the Department of Communication.

Dr. Hawkinson began his academic career at Western Illinois as an assistant professor of communication, and later was promoted to associate, then full professor. He also was an adjunct professor in African American Studies and an instructor in the Honors Program. During his time on the faculty, he served as leader of both the Faculty Senate and the faculty union. He has published numerous articles and dozens of professional papers. His research interests and creative pursuits include storytelling, oral tradition and performance of literature. Among his many dramatic presentations was a 2009 performance titled "Abe Lincoln," given at the Western Illinois Museum in honor of Lincoln's 200th birthday.

Dr. Hawkinson was in the U.S. Army for three years. After serving in the Illinois National Guard as a field artillery officer and executive officer for a field artillery battery, he joined the Army as an Infantry officer. He served in Germany as a platoon leader and a weapons platoon leader and as a public affairs officer.



Support Staff



GREG BAMBERGER
Director of Athletics

Greg Bamberger has served as Kutztown University's director of athletics since May 1, 2005.

Bamberger has overseen a successful era in Golden Bear Athletics. KU won the 2005-06 Dixon Trophy, a

first for the institution. The trophy is awarded to the Pennsylvania State Athletic Conference's top athletic department.

Bamberger came to Kutztown from Glenville State College in West Virginia, where he served as director of athletics from 2002-05.

Prior to taking over as director of athletics, Bamberger was an assistant football coach and lecturer at Glenville for three semesters. He was the assistant head coach, offensive coordinator and coached the offensive line for the Pioneers.

From 1997 until 2000, Bamberger was a district sales coordinator for AFLAC. Bamberger previously served as assistant football coach at the Virginia Military Institute and Southeast Missouri State.

Bamberger earned his master's degree in sports administration from Temple University in 1989. He is a 1982 graduate of Duke University with a bachelor's degree in management sciences. He was a three-year starter for the Blue Devils' football team, serving as co-captain in 1981. Bamberger was born in Abington, Pa., and is a graduate of Phoenixville High School. He and his wife, Bernadette, have three children.



JOHN GREEN
Associate Vice President Marketing, Communications, & External Affairs



MICHELLE GOBER
Associate Director of Athletics



JASON LANTER
Faculty Athletic Representative



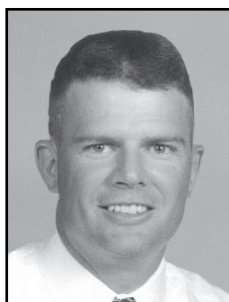
ALTA HART
Assistant to the Director of Athletics for Programming & Promotions



RENNIE SACCO
Director of Sports Medicine



MARTHA ANDERSON
Athletic Trainer



JACK ENTRIKEN
Athletic Trainer



BRANDON NOLT
Athletic Trainer



BRYAN SALVADORE
Sports Information Director



SCOTT SENNA
Interim Athletic Equipment Manager



MARTHA JOHNSON
Fiscal Assistant



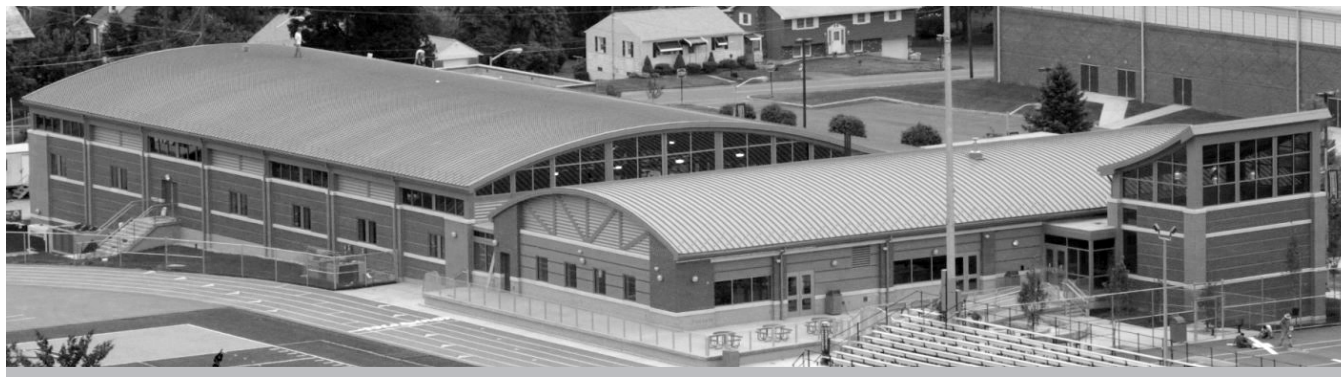
MELISSA LINCOLN
Secretary

Facilities

Kutztown University is blessed with some of the top athletic facilities among Division II colleges and universities in the eastern United States. 19 of KU's 21 teams have their home venue on campus.



UNIVERSITY FIELD AT ANDRE REED STADIUM | University Field has been home to KU football since 1936. The facility has also been home to KU men's and women's outdoor track and field. The current grandstand, press box, and concession stand were constructed for the 1988 season. In 2005, the current artificial turf was installed and the track was resurfaced, and Golden Bear field hockey moved to the facility. Lights were installed the same year, and first became operational for the 2006 season. Golden Bear alumnus and Pro Football Hall of Famer Andre Reed '05 tossed the coin at the first football night game. The visitors' bleachers, which seat approximately 1,000, were replaced in 2010. The stadium has also hosted KU club and intramural sporting events, KU's spring commencement ceremonies (until 2005, the year Reed graduated), high school football, various special events, and occasional Golden Bear women's lacrosse games. On Saturday, Oct. 18, 2014, the university dedicated the facility in honor of Reed at a pre-game ceremony. In honor of its 78-year history, the field at the facility retained the name University Field, and will be referred to officially as University Field at Andre Reed Stadium.



STUDENT-RECREATION CENTER | The 64,623-square-foot student recreation center opened in the fall of 2006. The facility, located between Keystone Hall and University Field, is THE place to be for student recreation and fitness on campus. Among the amenities are a nearly 9,000-square-foot fitness center and weight room, two group fitness studios, two racquetball courts, an indoor rock climbing wall, a synthetic surface gymnasium with curved walls for indoor sports, a synthetic surface half gymnasium, a suspended jogging track (approx. 1/10 mile), an office suite for recreational services staff, a meeting room, retail space/snack bar and locker rooms with jacuzzis.

Facilities



KEYSTONE HALL | The home of the Golden Bears, Keystone Hall is the hub of indoor athletic activity on campus. The 3,400-seat Keystone Arena, located in the center of Keystone Hall, is the home of the women's volleyball, men's and women's basketball and wrestling teams. Keystone Hall houses the Golden Bear sports medicine department, designated locker rooms for intercollegiate athletic teams. The department of athletics administrative offices and all of the coaches' offices are located in Keystone Hall.



RISLEY WEIGHT ROOM | Renovated in 2012, athletes get extensive use out of the free-weight room, located on the ground floor of Risley Hall, the original gym. The weight room was recently renovated and expanded.



O'PAKE FIELDHOUSE | O'Pake Fieldhouse is home to the KU men's and women's indoor track teams, and is used by all teams for indoor practices, overflow athletic events, and KU's winter and spring commencement ceremonies, camps and clinics throughout the year. It also is used for non-athletic events.

Facilities



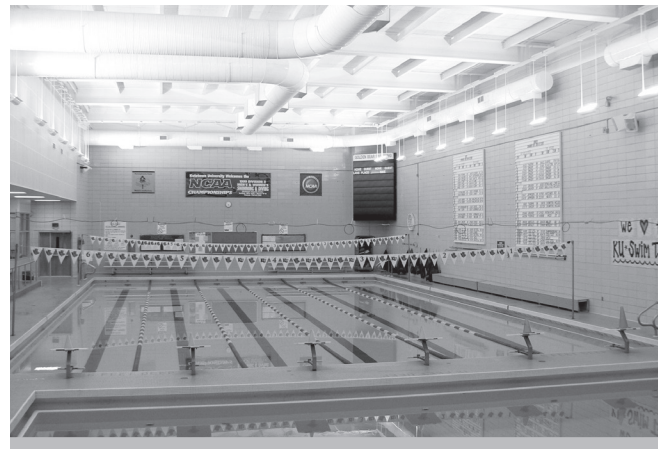
KEYSTONE FIELD | Located behind Keystone Hall, Keystone Field includes the 500-seat grass home to the Golden Bear women's soccer and women's lacrosse programs. The facility debuted in 1999.



NORTH CAMPUS FIELD (BASEBALL) | KU's North Campus Baseball Field was the site of the 2001, 2002 and 2007 NCAA Division II North Atlantic Regional Championships. The facility includes dugouts, a hitting cage and bullpens, while recent additions include a new backstop, infield tarp, banners and signs of team accomplishments, sponsorship signs and a new scoreboard. Dimensions for the field are 335 down the lines, 380 to the power alleys and 405 to center field.



NORTH CAMPUS FIELD (SOFTBALL) | KU's North Campus Softball Field is the home of the Golden Bear softball team. The facility includes dugouts, hitting cages and an infield tarp. Dimensions for the field are 190 to right and left field and 220 to center.



KEYSTONE POOL | The home of Golden Bear aquatics is Keystone Natatorium. The six-lane, 25-yard competition pool is located in Keystone Hall. In 2008, the facility was refurbished, with the installation of new lighting, bleachers and ventilation system. Additional features include a state-of-the-art public address system, Colorado System V timing equipment with aqua grip touchpads and a six-lane mercury display scoreboard.

Head Coach Kate Scattergood



KATE SCATTERGOOD enters her fourth year guiding the Kutztown University women's lacrosse program in 2016.

Her career record at Kutztown stands at 8-41 with a 3-32 mark in PSAC play. In her 12 years of coaching, Scattergood's record is 85-102.

Scattergood arrived at Kutztown in 2013 after spending the previous five seasons as the head coach at Washington & Jefferson College, an NCAA Division III institution in Washington, Pa., where she was the first coach in school history.

While coaching the Presidents, Scattergood compiled a 50-27 record. The 2010, 2011 and 2012 teams each earned bids to the ECAC Division III Mid-Atlantic Championships and W&J posted a 39-12 record during that time.

In 2009, just the Presidents' second season, the team finished with an 8-7 overall record, sealing the first winning season in school history. W&J won six of its last seven matches to build momentum for the breakout year in 2010. During her five years at Washington & Jefferson, she coached the program's first All-American and numerous all-region selections.

Scattergood was responsible for building W&J's women's lacrosse program after being hired in the summer of 2006. The Presidents earned their first-ever victory on March 14, 2008, defeating Lancaster Bible by a 16-1 margin.

Scattergood arrived at Washington & Jefferson after spending four seasons as the head women's lacrosse coach at Susquehanna University, where she compiled a record of 27-34.

The 1998 Shippensburg University graduate also served as the assistant field hockey coach at Susquehanna for three seasons and as the strength and conditioning coach for all Crusader student-athletes.

In 2001-02, Scattergood was the assistant field hockey and women's lacrosse coach at Roanoke College (Va.). As a player at Shippensburg, Scattergood was a three-time All-PSAC women's lacrosse performer.



		All Games		
Year	School	W	L	Pct.
2003	Susquehanna	8	6	.571
2004	Susquehanna	6	10	.375
2005	Susquehanna	7	9	.438
2006	Susquehanna	6	9	.400
Susquehanna Totals		27	34	.443

Year	School	W	L	Pct.
2008	Washington & Jefferson	3	8	.273
2009	Washington & Jefferson	8	7	.533
2010	Washington & Jefferson	13	4	.765
2011	Washington & Jefferson	13	4	.765
2012	Washington & Jefferson	13	4	.765
Wash. & Jeff. Totals		50	27	.649

		PSAC Games		
		W	L	Pct.
2013	Kutztown	3	14	.176
2014	Kutztown	4	12	.250
2015	Kutztown	1	15	.063
Kutztown Totals		8	41	.163

		W	L	Pct.	W	L	Pct.
Career Totals - 12 Seasons		85	102	.455	3	32	.086

2016 Coaching Staff



MELISSA FUREY

Assistant Coach

Melissa Furey enters her third year as an assistant coach of the Kutztown University women's lacrosse team in 2016.

Furey came to KU from Upper Perkiomen High School, where she served as the head girls' lacrosse coach from 2007-13. She also served two seasons as the assistant girls' lacrosse coach at North Penn High School in 2005 and 2006, where she specialized in goalie training.

During the past year, Furey has also been a part of the Lacrosse Evolution program in the Philadelphia area. Here she served as the director of the women's lacrosse program as well as the facility director for the King of Prussia site.

Furey received a Bachelor of Science degree from Ursinus College in exercise and sports science in 2004. At Ursinus, Furey played goalkeeper for the women's lacrosse team from 2001-04, earning team MVP in her senior year.

Furey also has experience as a health and physical education teacher in the Upper Perkiomen and East Penn School Districts, as well as field hockey coaching experience with the X-Calibur U-12 travel indoor team.





Season Outlook

2016 Roster

NO.	NAME	POS.	HT.	YR.	HOMETOWN / HIGH SCHOOL
2	Jen Bergey	GK	5-2	So.	Souderton, Pa. / Souderton
3	Madison Carlucci	A	5-0	So.	Wayne, N.J. / Wayne Valley
5	Aimee Beck	M/A	5-5	Fr.	Green Lane, Pa. / Pennridge
6	Riley Patrone	D	5-2	Sr.	Downingtown, Pa. / Bishop Shanahan
7	Lauren Huggins	M	5-3	So.	Media, Pa. / Penncrest
9	Carley Vegso	A	5-5	Fr.	Newtown Square, Pa. / Marple Newtown
10	Amanda Lehman	M	5-3	Fr.	York, Pa. / West York Area
12	Jordan Klebe	A	5-2	Fr.	Bishopville, Md. / Stephen Decator
13	Shana Hayes	M	5-2	So.	Manahawkin, N.J. / Southern Regional
14	Sarah Gabriele	M	5-6	So.	Felton, Pa. / York Catholic
15	Lauren Schmidt	M	5-8	Fr.	Hanover, Pa. / South Western
17	Courtney O'Neill	D	5-9	Jr.	Stratford, N.J. / Sterling
18	Jess Christ	M	5-10	Fr.	Harrisburg, Pa. / Central Dauphin East
21	Reilly Donovan	D	5-4	Fr.	Bel Air, Md. / Patterson Mill
22	Haley Romoser	D	5-3	R-So.	Stewartstown, Pa. / Kennard-Dale
23	Makayla Bowman	A	5-5	Fr.	Lansdale, Pa. / North Penn
25	Cara Lord	A	5-2	Sr.	Media, Pa. / Penncrest
28	Molly O'Neill	M/D	5-5	Fr.	Collingswood, N.J. / Collingswood
29	Emily Smith	M	5-8	Fr.	Philadelphia, Pa. / Saint Hubert Catholic
31	Abby Cox	GK	5-6	Jr.	York, Pa. / West York

COACHING STAFF

NAME

Kate Scattergood

Melissa Furey

TITLE

Head Coach (4th Season)

Assistant Coach

PRONUNCIATION GUIDE

3	Madison Carlucci	car-LEW-chee
12	Jordan Klebe	KLEE-bee
14	Sarah Gabriele	GAY-BREE-ul
22	Haley Romoser	ROE-muh-zur

2016 Season Preview



The Kutztown University women's lacrosse team heads into the 2016 season with hopes of improving upon last season's win-loss record and relying on its depth and experienced veteran players for a successful campaign.

Head coach Kate Scattergood is at the helm for her fourth season with the Golden Bears, hoping to get back on track following last season's disappointing record and compete in the competitive Pennsylvania State Athletic Conference (PSAC).

Scattergood had a 1-15 record last season at KU, but hopes to improve that win percentage with a large freshmen recruiting class and added depth to the team this season, despite the graduation of three talented seniors last year.

"I think the girls that we return from last year's team are going to be mentally tougher because of the challenges and obstacles that we went through last season," Scattergood said. "We had a pretty successful fall. We rotated everyone in and learned what everyone's strengths and weaknesses were.

"Practices and competitions were good, so I'm hoping that it carries over into the season," Scattergood continued. "We have a much larger talent base this season and we will be able to handle more than we did a season ago. I want to see us constantly progress as a team and get our freshmen comfortable this season in their role as well as improve on our win-loss record from last season."

Kutztown finished in 13th out of 13 teams last season in the PSAC standings, so it has nowhere to go but up as it hopes to improve every day and start competing with the top teams in the conference.

"Our depth in the midfield will be crucial this season," Scattergood stated. "We also have a lot of height, which is great and will help us on the draw, an area we struggled with last season."

Attack

Senior attacker Cara Lord is the most experienced player on the team and will be relied upon as one of the leaders. She started in all 16 games last season, recording two goals and seven assists. Lord also compiled 11 groundballs, 10 draw controls and five caused turnovers. Coach Scattergood will look to Lord to provide a good example to the incoming group of freshmen. Lord has a great attitude and is one of only a few players that have been in the sys-

tem with Coach Scattergood during her entire tenure at KU.

Sophomore Madison Carlucci returns for her second season with the team after a successful freshman year. She was fifth on KU with five goals and was tied for fourth with five assists. She also was third on KU with 27 groundballs. Carlucci worked really hard to get in great physical shape since last season and her quickness will be one of her strong attributes heading into the season.

Freshmen Carley Vegso, Makayla Bowman and Aimee Beck will all be given an opportunity to compete for time this season and will provide much-needed depth to the position. Fellow freshman Jordan Klebe is coming off an injury and will be forced to redshirt this season.

Midfield

Sophomore Sarah Gabriele led Kutztown last season with 33 goals and 38 total points to go along with 26 groundballs, 24 draw controls and 15 caused turnovers. She was a definite bright spot from last season and will be relied on heavily as one of the team's top returning players.

Gabriele has been incorporating new moves into her repertoire and should develop her offensive game even more as the season progresses. Coach Scattergood noted that Gabriele is a competitor, very skilled, a great shooter and can take a hit.

Sophomore Lauren Huggins returns as an important midfielder for KU after a successful freshman campaign. She was fourth on the team with 10 goals and led KU with nine assists. She was second on the team with 34 groundballs and 23 caused turnovers to go along with 24 draw controls.

Huggins is one of the fastest players on the team, has tremendous speed and is improving on the defensive end. She can play both sides of the ball, can run the field, and will be looked to as one of KU's top scoring threats this season.

A large group of freshmen consisting of Amanda Lehman, Lauren Schmidt, Emily Smith and Jess Christ will all compete for playing time and add depth at the position. Sophomore Shana Hayes will also be given a chance for playing time.

2016 Season Preview

Defense

The KU defense will be led by junior Courtney O'Neill. She led KU and ranked second in the PSAC with 59 groundballs. O'Neill was second in the PSAC with 2.13 caused turnovers per game and 15th with 39 draw controls. O'Neill is the central communicator on the team, can read a defense well, sends plays in and out, and will be relied on heavily as the veteran leader of the defense.

Since the 2008 season, she has posted the second and fourth most groundballs in a single-season in KU history with 59 in 2015 and 58 in 2014. O'Neill also posted the second and third most caused turnovers in KU single-season history with 34 in 2015 and 33 in 2014. Heading into her junior season, O'Neill ranks third all-time in KU history with 67 caused turnovers, sixth with 117 groundballs and tied for eighth with 53 draw controls.

Redshirt-sophomore Haley Romoser returns after receiving a medical redshirt last season. She started in both of her appearances, recording eight groundballs. Romoser will play a role in transition, is a strong defender and has great stick work.

Freshman Reilly Donovan could be a possible starter this season. She will receive ample playing time and Coach Scattergood hopes to develop her game significantly this season.

Senior Riley Patrone is a first-year Golden Bear that will provide depth, along with freshman Molly O'Neill.

Goalkeeper

The goalkeeper position is expected to be an open competition between junior Abby Cox and sophomore Jen Bergey. Both received plenty of game action last season and will be looked upon to improve this year.

Cox started in 10 of her 11 appearances, recording 69 saves and a .390 save percentage. Bergey started in six of her 12 games played, recording 74 saves and a .376 save percentage.

Coach Scattergood expects both goalies to see game action and it could end up being a team-to-team or game-to-game decision on who starts in goal. She likes the different skillsets of the two goalies and thinks it could be a factor in who she starts from game-to-game.

Cox is a taller goalie at 5'6" and is good up high in goal, while Bergey is only 5'2", but is quick and provides a different skillset in goal than Cox. Both are expected to take a step forward this year in what could be the most interesting position battle for the team.

Up Next

KU begins its season with a non-conference home game against Holy Family University on Wednesday, March 2, at 3 p.m. at Keystone Field. The Golden Bears follow that up with four consecutive road matchups, including their PSAC opener at Shippensburg on Tuesday, March 15, before returning back home on Thursday, March 17.



2016

Golden Bears

2016 Golden Bears - Returners



CARA LORD

5-2 | Senior

Attack

Media, Pa. / Penncrest

Major: Psychology



Career Honors

4x Dean's List Honors
2x PSAC Scholar-Athlete

2015: Named a PSAC Scholar-Athlete (7/6)...Lord started in all 16 games for the Golden Bears during her junior season. She recorded two goals, seven assists, 11 groundballs and 10 draw controls. She had a season-high three assists against West Va. Wesleyan...Scored a goal in a loss to Slippery Rock (4/18)...Recorded an assist and caused a turnover against Millersville (4/8)...Tallied an assist against East Stroudsburg (3/22)...Scored a goal against Philadelphia U. (3/18)...Career-high three assists in a win over West Virginia Wesleyan (3/11).

2014: Named a PSAC Scholar-Athlete (7/3)...Lord scored two goals and dished out four assists in her sophomore season. Two of her assists came in one game (Edinboro). Lord picked up 15 groundballs, had three draw controls and caused a turnover. Had an assist against IUP (4/12)...Recorded an assist in a win over Millersville (4/9)...Had a goal and two assists against Edinboro (3/28)...Recorded a goal and four groundballs in a win over Young Harris (3/18).

2013: Lord started in nine of her 17 games played in her freshman season. She tallied three assists and two goals as five of her seven shots were on-goal. She also had eight groundballs, three caused turnovers and three draw controls. Recorded an assist against Slippery Rock (4/27)...Had an assist against Philadelphia (4/16)...Recorded a goal against Mercyhurst (4/5)...Had an assist against Shepherd (3/23)...Scored a goal against Converse (3/19).

Single-Game Highs

Points	3	2x, last vs. W. Va. Wes.	3/11/2015
Goals	1	6x	
Assists	3	vs. W. Va. Wesleyan	3/11/2015
Shots	3	at Millersville	4/9/2014
Groundballs	4	at Young Harris	3/18/2014
Draw Controls	2	at Edinboro	3/27/2015
Caused TOs	1	9x	



Career Statistics

SEASON	GP	G	A	PTS	SHOTS	SHOT%	SOG	SOG%	GW	UP	DN	GB	TO	CT	DC	FO	FO%
2013	17	2	3	5	7	.286	5	.400	0	0	0	8	0	3	3	0-0	.000
2014	16	2	4	6	10	.200	9	.222	0	1	0	15	0	1	3	0-0	.000
2015	16	2	7	9	7	.286	6	.333	0	0	0	11	0	5	10	0-0	.000
TOTAL	49	6	14	20	24	.250	20	.300	0	1	0	34	0	9	16	0-0	.000

2016 Golden Bears - Returners



ABBY COX

5-6 | Junior

Goalkeeper

York, Pa. / West York

Major: Leisure and Sport Studies



Career Honors

5x Dean's List Honors

2x PSAC Scholar-Athlete

2x Member of SAAC

D2ADA Academic Achievement Award (2014-15)

Single-Game Highs

Saves	11	at Philadelphia U.	3/18/2015
Groundballs	4	at East Stroudsburg	3/22/2015

2015: Named a PSAC Scholar-Athlete (7/6)...Cox started in 10 of her 11 appearances for the Golden Bears during her sophomore season. She recorded 69 saves and had a .390 save percentage. She recorded double-digit saves in two games and had a career-high 11 against Philadelphia University on Mar. 18...Tallied six saves in a loss to Chestnut Hill (3/14)...Three saves in a win over West Virginia Wesleyan (3/11).

2014: Named a PSAC Scholar-Athlete (7/3)...Cox played in six games her freshman season, picking up 14 saves. Had four saves against IUP (4/12)...Recorded three saves against East Stroudsburg (3/22).



Career Statistics

SEASON	GP	MIN	GA	GAAVG	SAVES	SAVE%	W	L	T	SHO	SF
2014	6	97:29	18	11.08	14	.438	0	0	0	0	42
2015	11	480:05	108	13.50	69	.390	1	9	0	0	215
TOTAL	17	577:34	126	13.10	83	.397	1	9	0	0	257

2016 Golden Bears - Returners



COURTNEY O'NEILL

5-9 | Junior

Defense

Stratford, N.J. / Sterling

Major: Secondary Education



Career Honors

Dean's List Honors (Spring 2014)

2015: O'Neill started in all 16 games for the Golden Bears during her sophomore season. She led the team 59 groundballs, 39 draw controls and 34 caused turnovers. She had a season-high 10 groundballs against Slippery Rock on Apr. 18...Five groundballs and caused five turnovers in a loss to Lock Haven (4/22)...Career-tying 10 groundballs against Slippery Rock (4/18)...Posted five groundballs, caused two turnovers and came away with three draw controls against IUP (4/11)...Tallied seven groundballs and caused three turnovers against Millersville (4/8)...Four draw controls against Seton Hill (4/4)...Posted seven groundballs, two caused turnovers and four groundballs against Shippensburg (3/31)...Came away with three draw controls, three caused turnovers and two groundballs against East Stroudsburg (3/22)...Tallied five groundballs and seven caused turnovers against Philadelphia U. (3/18)...Recorded four groundballs and four caused turnovers in a win over West Virginia Wesleyan (3/11).

2014: As a freshman, O'Neill made an impressive collegiate debut. She led the Golden Bears in groundballs with 58 for second in a single-season in KU history. She led the team in caused turnovers with 33, also rating second in a single-season. Had eight groundballs against Gannon (4/26)...Four groundballs and three draw controls in a win over Millersville (4/9)...Had five draw controls against Seton Hill (4/5)...Recorded five groundballs and six caused turnovers against Bloomsburg (3/29)...Picked up a school-record-tying 10 groundballs and five caused turnovers, tied for fifth all-time, in a win over Coker (3/19)...Five groundballs and three caused turnovers in a win over Young Harris (3/18)...Caused four turnovers against Georgian Court (3/15).

Single-Game Highs

Groundballs	10	2x, last vs. Slippery Rock	3/19/2014
Draw Controls	6	at Philadelphia U.	3/18/2015
Caused TOs	6	Bloomsburg	3/29/2014



Career Statistics

SEASON	GP	G	A	PTS	SHOTS	SHOT%	SOG	SOG%	GW	UP	DN	GB	TO	CT	DC	FO	FO%
2014	16	0	0	0	0	.000	0	.000	0	0	0	58	0	33	14	0-0	.000
2015	16	0	0	0	0	.000	0	.000	0	0	0	59	0	34	39	0-0	.000
TOTAL	32	0	0	0	0	.000	0	.000	0	0	0	117	0	67	53	0-0	.000

2016 Golden Bears - Returners



JEN BERGEY

5-2 | Sophomore

Goalkeeper

Souderton, Pa. / Souderton

Major: Psychology



2015: Bergey started in six of her 12 appearances for the Golden Bears during her freshman season. She recorded 74 saves and had a .376 save percentage. She recorded double-digit saves in four games and had a career-high 14 against Slippery Rock on Apr. 18.

Single-Game Highs

Saves	14	vs. Slippery Rock	4/18/2015
Groundballs	6	vs. Slippery Rock	4/18/2015

Career Statistics

SEASON	GP	MIN	GA	GA AVG	SAVES	SAVE%	W	L	T	SHO	SF
2015	12	485:55	123	15.19	74	.376	0	6	0	0	216
TOTAL	12	485:55	123	15.22	74	.376	0	6	0	0	216



MADISON CARLUCCI

5-0 | Sophomore

Attack

Wayne, N.J. / Wayne Valley

Major: Mathematics



Career Honors

PSAC Scholar-Athlete
Dean's List Honors
Member of SAAC

2015: Named a PSAC Scholar-Athlete (7/6)...Carlucci started in 12 of her 15 appearances for the Golden Bears during her freshman season. She recorded seven goals, five assists, 15 shots-on-goal, and 27 groundballs during the year. She had a season-high two goals against Philadelphia University and East Stroudsburg...Posted a career-high in groundballs with six against Gannon (4/25)...Scored against Slippery Rock (4/18)...Posted an assist against IUP (4/11)...Tallied three caused turn-overs against Shippensburg (3/31)...Recorded an assist and a groundball in a loss to Bloomsburg (3/28)...Scored two goals and came up with two groundballs in a loss to East Stroudsburg (3/22)...Came away with two goals and an assist against Philadelphia U. (3/18)...Tallied an assist in a loss to Chestnut Hill (3/14)...Recorded a goal in a win over West Virginia Wesleyan (3/11).

Single-Game Highs

Points	3	at Philadelphia U.	3/18/2015
Goals	2	2x, last vs ESU	3/22/2015
Assists	1	5x	
Shots	3	3x, last at Bloomsburg	3/28/2015
Groundballs	6	at Gannon	4/25/2015
Draw Controls	2	at Bloomsburg	3/28/2015
Caused TOs	3	vs Shippensburg	3/31/2015

Career Statistics

SEASON	GP	G	A	PTS	SHOTS	SHOT%	SOG	SOG%	GW	UP	DN	GB	TO	CT	DC	FO	FO%
2015	15	7	5	12	17	.412	15	.467	0	1	0	27	0	7	8	0-0	.000
TOTAL	15	7	5	12	17	.412	15	.467	0	1	0	27	0	7	8	0-0	.000

2016 Golden Bears - Returners



SARAH GABRIELE

5-6 | Sophomore
Midfield

Felton, Pa. / York Catholic

Major: Elementary Education



(pronounced GAY-BREE-ul)

Career Honors

PSAC Scholar-Athlete (2014-15)

2x Dean's List Honors

Member of SAAC

2015: Named a PSAC Scholar-Athlete (7/6)...Gabriele started in 15 of her 16 appearances for the Golden Bears during her freshman season. She led the team with 33 goals, 38 points and 62 shots-on-goal. She also had five assists and 26 groundballs during the year. She had a season-high four goals on three separate occasions and had a season-high 13 shots against Gannon on Apr. 25...Posted her fifth hat-trick of the season in a loss to Gannon (4/25)...Scored four goals and grabbed four draw controls against Slippery Rock (4/18)...Tallied four goals, three groundballs and two draw controls against IUP (4/11)...Posted a hat-trick, two groundballs and three draw controls against Millersville (4/9)...Recorded two goals, two groundballs and caused a turnover against Seton Hill (4/7)...Posted a goal, an assist, three caused turnovers and two draw controls against Shippensburg (3/31)...Recorded a goal and two groundballs against Bloomsburg (3/28)...Tallied two goals and a draw control in a loss to East Stroudsburg (3/22)...Four goals and sent KU into overtime with a goal in the final six minutes of regulation against Philadelphia U. (3/18)...Recorded two goals against Chestnut Hill (3/14)...Tallied two goals and two assists in a win over West Virginia Wesleyan (3/11).

Single-Game Highs

Points	5	vs. Slippery Rock	4/18/2015
Goals	4	3x, last vs. Rock	4/11/2015
Assists	2	vs W. Va. Wesleyan	3/11/2015
Shots	13	at Gannon University	4/25/2015
Groundballs	3	2x, last at IUP	3/31/2015
Draw Controls	4	vs. Slippery Rock	3/31/2015
Caused TOs	4	at West Chester	3/24/2015



Career Statistics

SEASON	GP	G	A	PTS	SHOTS	SHOT%	SOG	SOG%	GW	UP	DN	GB	TO	CT	DC	FO	FO%
2015	16	33	5	38	85	.388	62	.532	0	1	0	26	0	15	24	0-0	.000
TOTAL	16	33	5	38	85	.388	62	.532	0	1	0	26	0	15	24	0-0	.000

2016 Golden Bears - Returners



LAUREN HUGGINS

5-3 | Sophomore
Midfield

Media, Pa. / Penncrest

Major: Leisure and Sport Studies



Career Honors

2x Dean's List Honors

2015: Huggins started in 15 of her 16 appearances for the Golden Bears during her freshman season. She recorded 10 goals, a team-high nine assists, 33 shots-on-goal and 34 groundballs during the year. She also had 24 draw controls and 23 caused turnovers. She recorded career-highs in five statistical categories with four points, three assists, six groundballs, five draw controls and six caused turnovers against Gannon on Apr. 25...Scored a goal and caused two turnovers in a loss to Lock Haven (4/22)...Scored a goal against Slippery Rock (4/19)...Posted three groundballs and two caused turnovers against IUP (4/11)...Scored a goal against Millersville (4/8)...Recorded a goal, three groundballs and caused a turnover against Seton Hill (4/4)...Came away with two caused turnovers and a draw control against Shippensburg (3/31)...Posted a goal and two draw controls against Bloomsburg (3/30)...Scored a goal and caused a turnover against East Stroudsburg (3/22)...Tallied an assist against Philadelphia U. (3/18)...Recorded an assist against Chestnut Hill (3/14).

Single-Game Highs

Points	4	at Gannon	4/25/2015
Goals	1	10x	
Assists	3	at Gannon	4/25/2015
Shots	6	vs. East Stroudsburg	3/22/2015
Groundballs	6	at Gannon	4/25/2015
Draw Controls	5	at Gannon	4/25/2015
Caused TOs	6	at Gannon	4/25/2015



Career Statistics

SEASON	GP	G	A	PTS	SHOTS	SHOT%	SOG	SOG%	GW	UP	DN	GB	TO	CT	DC	FO	FO%
2015	16	10	9	19	52	.192	33	.303	0	0	0	34	0	23	24	0-0	.000
TOTAL	16	10	9	19	52	.192	33	.303	0	0	0	34	0	23	24	0-0	.000

2016 Golden Bears - Returners



HALEY ROMOSER

5-3 | Redshirt Sophomore
Defense

Stewartstown, Pa. / Kennard-Dale

Major: Business Administration



(pronounced ROE-muh-zur)

Career Honors

PSAC Scholar-Athlete

Single-Game Highs

Groundballs	5	at Chestnut Hill	3/14/2015
Draw Controls	1	at Young Harris	3/18/2014
Caused TOs	3	Gannon	4/26/2014

2015: Received a medical redshirt...Romoser started in both of her appearances for the Golden Bears during her sophomore season. She recorded eight groundballs and caused one turnover during the year. She had a season-high five groundballs against Chestnut Hill on Mar. 14...Recorded three groundballs in a win over West Virginia Wesleyan (3/11).

2014: Named a PSAC Scholar-Athlete (7/3)...Romoser played in all 16 games along with starting in two in her freshman season. She finished the season with six caused turnovers and 14 groundballs. Recorded three caused turnovers against Gannon (4/26).



Career Statistics

SEASON	GP	G	A	PTS	SHOTS	SHOT%	SOG	SOG%	GW	UP	DN	GB	TO	CT	DC	FO	FO%
2014	16	0	0	0	0	.000	0	.000	0	0	0	14	0	6	1	0-0	.000
2015	2	0	0	0	0	.000	0	.000	0	0	0	8	0	1	0	0-0	.000
TOTAL	18	0	0	0	0	.000	0	.000	0	0	0	22	0	7	1	0-0	.000

2016 Golden Bears - Newcomers



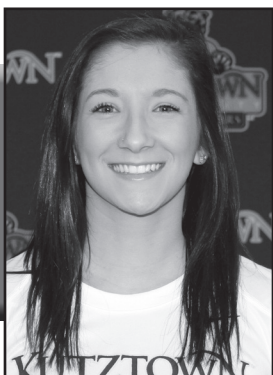
RILEY PATRONE

5-2 | Senior

Defense

Downingtown, Pa. / Bishop Shanahan

Major: Fine Arts



SHANA HAYES

5-2 | Sophomore

Midfield

Manahawkin, N.J. / Southern Regional

Major: Communication Studies



AIMEE BECK

5-5 | Freshman

Midfield / Attack

Green Lane, Pa. / Pennridge

Major: Secondary Education



MAKAYLA BOWMAN

5-5 | Freshman

Attack

Lansdale, Pa. / North Penn

Major: Business Administration



2016 Golden Bears - Newcomers



JESS CHRIST

5-10 | Freshman
Midfield

Harrisburg, Pa. / Central Dauphin East
Major: Exploratory Studies



REILLY DONOVAN

5-4 | Freshman
Defense

Bel Air, Md. / Patterson Mill
Major: Computer Science



JORDAN KLEBE

5-2 | Freshman
Attack

Bishopville, Md. / Stephen Decator
Major: Communication Design



(pronounced KLEE-bee)



AMANDA LEHMAN

5-3 | Freshman
Midfield

York, Pa. / West York Area
Major: Business Administration



Career Honors

Dean's List Honors (Fall 2015)

2016 Golden Bears - Newcomers



MOLLY O'NEILL

5-5 | Freshman
Midfield / Defense
Collingswood, N.J. / Collingswood
Major: Special Education



LAUREN SCHMIDT

5-8 | Freshman
Midfield
Hanover, Pa. / South Western
Major: Biology / Pre-Med



EMILY SMITH

5-8 | Freshman
Midfield
Philadelphia, Pa. / Saint Hubert Catholic
Major: Psychology



CARLEY VEGSO

5-5 | Freshman
Attack
Newtown Square, Pa. / Marple Newtown
Major: Environmental Science East





2015 Season in Review

2015 Results / Statistics



RECORD:	OVERALL	HOME	AWAY	NEUTRAL
ALL GAMES	1-15	0-7	0-8	1-0
CONFERENCE	0-12	0-6	0-6	0-0
NON-CONFERENCE	1-3	0-1	0-2	1-0

Date	Opponent	Score	Att.
Mar 11	vs West Va. Wesleyan	W 16-4	55
Mar 14	at Chestnut Hill Coll.	L 7-9	77
Mar 18	at Philadelphia U.	Lot 11-15	50
* Mar 22	EAST STROUDSBURG	L 9-16	72
* Mar 24	at #16 WEST CHESTER	L 5-14	178
* Mar 27	at Edinboro	L 5-17	68
* Mar 28	at #20 Bloomsburg	L 8-18	75
* Mar 31	SHIPPENSBURG	L 10-12	42
Apr 02	GEORGIAN COURT	L 7-10	82
* Apr 04	at #16 Seton Hill	L 7-17	115
* Apr 08	MILLERSVILLE	L 5-14	54
* Apr 11	at Indiana (PA)	L 7-17	87
* Apr 17	#7 MERCYHURST	L 6-17	89
* Apr 18	SLIPPERY ROCK	L 11-19	134
*- Apr 22	#2 LOCK HAVEN	L 2-16	74
* Apr 25	at Gannon University	L 11-16	142

TEAM STATISTICS	KUTZ	OPP
SHOT STATISTICS		
Goals-Shot attempts	127-390	231-445
Goals scored per game	7.94	14.44
Shot pct.	.326	.519
Shots on goal-Attempts	277-390	374-445
SOG pct.	.710	.840
Shots/Game	24.4	27.8
Assists	44	122
Free position Made-Att	21-73	42-91
Free position pct.	.288	.462
GOAL BREAKDOWN		
Total Goals	127	231
Free-position	21	42
Unassisted	83	107
Overtime	0	4
Goals scored average	7.89	14.35
GROUND BALLS	355	361
DRAW CONTROLS	169	225
TURNOVERS	297	299
CAUSED TURNOVERS	134	154
CLEARs	152-190	174-216
Clear Pct.	.800	.806
ATTENDANCE		
Total	547	792
Dates/Avg Per Date	7/78	8/99
Neutral Site #/Avg	1/55	

##	PLAYER	GP	G	A	Pts	Sh	Gw	GB	DC	TO	CT
14	Sarah Gabriele	16	33	5	38	85	0	26	24	45	15
9	Jillian Spencer	14	28	8	36	79	0	23	21	26	10
4	Taylor Stone	16	24	7	31	73	0	16	8	39	1
7	Lauren Huggins	16	10	9	19	52	0	34	24	32	23
3	Madison Carlucci	15	7	5	12	17	0	27	8	23	7
10	Devan Davis	16	8	2	10	26	0	20	9	27	4
28	Taylor Sandin	5	9	0	9	14	1	13	7	8	2
25	Cara Lord	16	2	7	9	7	0	11	10	18	5
5	Kelli Serpi	16	5	1	6	32	0	22	11	16	6
16	Kelsey Halligan	16	1	0	1	2	0	33	4	16	12
11	Jillian Figel	14	0	0	0	2	0	25	2	7	8
20	Toni Ritrovato	6	0	0	0	1	0	1	1	1	0
31	Abby Cox	11	0	0	0	0	0	18	0	5	2
22	Haley Romoser	2	0	0	0	0	0	8	0	2	1
18	Megan Luckenbaugh	12	0	0	0	0	0	3	0	3	1
17	Courtney O'Neill	16	0	0	0	0	0	59	39	19	34
2	Jen Bergey	12	0	0	0	0	0	16	0	7	3
Total		16	127	44	171	390	1	355	169	297	134
Opponents		16	231	122	353	445	15	361	225	299	154

##	Goalie	GP	Min.	GA	GAAvg	Save	Pct	W-L-T
31	Abby Cox	11	480:05	108	13.50	69	.390	1-9-0
2	Jen Bergey	12	485:55	123	15.19	74	.376	0-6-0
Total		16	966:00	231	14.35	143	.382	1-15-0
Opponents		16	966:00	127	7.89	150	.542	15-1-0

Goals by Period	1st	2nd	OT	Total
Kutztown	60	67	0	127
Opponents	132	95	4	231

Saves by Period	1st	2nd	OT	Total
Kutztown	73	69	1	143
Opponents	80	67	3	150

Shots by Period	1st	2nd	OT	Total
Kutztown	174	213	3	390
Opponents	242	197	6	445

Shots on Goal	1st	2nd	OT	Total
Kutztown	140	134	3	277
Opponents	205	164	5	374

2015 All-PSAC Teams

2015 PSAC LACROSSE ALL-CONFERENCE

All-Conference First Team

Attack: Becca Himes, Mercyhurst
Attack: Amy Weinberg, IUP
Attack: Ashley Pyle, West Chester
Attack: Paige Constantino, Slippery Rock
Midfielder: Jessica Pandolf, Lock Haven
Midfielder: Emma Simmers, Seton Hill
Midfielder: Kelly Hamilton, Lock Haven
Midfielder: Kim Hooven, IUP
Defense: Jenna Dingler, Lock Haven
Defense: Hannah Bertolo, IUP
Defense: Siena Childs, West Chester
Defense: Christa Morrison, Mercyhurst
Goalkeeper: Chrissy Baffuto, Lock Haven

All-Conference Second Team

Attack: Julie Falk, Bloomsburg
Attack: Shannon Bissnette, Lock Haven
Attack: Emily Fagan, Seton Hill
Attack: Rachel Ward, Lock Haven
Midfielder: Katylin Callaghan, Slippery Rock
Midfielder: Mackenzie Jordan, Mercyhurst
Midfielder: Brigid Kyne, Bloomsburg
Midfielder: Erin Eckert, West Chester
Defense: Christina Hawkins, Lock Haven
Defense: Alessandra Nicholas, Seton Hill
Defense: Jessica Kallenborn, Gannon
Defense: Sarah Morris, Slippery Rock
Goalkeeper: Rebecca Muscella, Mercyhurst

All-Conference Third Team

Attack: Dina Cifelli, West Chester
Attack: Sabrina Fusco, Millersville
Attack: Lauren Nunes, East Stroudsburg
Attack: Jenna Schlagenhauf, Mercyhurst
Midfielder: Leilani King, Gannon
Midfielder: Keagan Pontious, Seton Hill
Midfielder: Taylor Ventre, Mercyhurst
Midfielder: Erin Wilcox, Slippery Rock
Defense: Annemarie Cericola, Shippensburg
Defense: Emily Koestler, Mercyhurst
Defense: Caitlyn O'Connell, East Stroudsburg
Defense: Mckayl Novak, West Chester
Goalkeeper: Angela Lontoc, IUP

Athlete of the Year: Jessica Pandolf, Lock Haven

Freshman of the Year: Sabrina Fusco,
Millersville

Coach of the Year: Kristen Selvage, Lock Haven



History

History

The Kutztown University women's lacrosse team first began play in 1975. Susan Miller was selected to guide the team as it competed at the club level in its first season as a team. When the team reached varsity status in 1976, its first official year of competition, the Golden Bears were 5-7.

The following year, Veronica Lawson took over and guided the program to its first winning season with a 9-5-1 record. Elaine Santo took over for Lawson after one year and piloted the squad to a 7-3-2 record.

In 1979, KU named Jocelyn Beck its fourth head coach. Beck went on to guide the program for the next six seasons and built the program into one of the best in the region. In her first three years at the helm, she compiled a record of 12-19-4. In 1982, the program reached elite status, as the Golden Bears went 13-1-1 and captured the first PSAC Championship in any Kutztown women's sport.

In 2001, the team was named one of the top six championship teams in KU athletics history.

Beck and the Golden Bears continued to make their mark as a conference power the next two seasons, as the team went 10-3 in 1983 and 9-2-1 in 1984, but fell in the PSAC Championship game both years.

In 1985, Beck stepped down as head lacrosse coach, but remained on board as an assistant coach for the following year.

Betty Wesner, KU's long-time field hockey coach, replaced Beck and served as head coach for the next six years. In her first two seasons, the team struggled with a combined 4-18 record. In the last four seasons, the Golden Bears were 27-25 under Wesner's guidance until the program was discontinued, along with men's lacrosse and men's golf following the 1990 season.

Wesner compiled a career record of 31-43 in six seasons as head women's lacrosse coach.

On Aug. 7, 2007, Kutztown University Athletic Director Greg Bamberger announced the hiring of Sarah Greer, a KU graduate and alumna of the field hockey program, as women's lacrosse was re-established at Kutztown.

Greer coached the program for five years (2008-12) and led the team to 16 wins over the time, including the team's first win in the PSAC in 2012.

In 2013, Kate Scattergood was hired as the head coach and continues to move the program in a positive direction.

Women's Lacrosse Players in KU Athletics Hall of Fame

Mary Ann Botto-Harvey – Attack (1979-82) Botto-Harvey was a four-year member of the women's lacrosse team. She scored 60 goals as the left-attack winger during KU's 1982 PSAC title season. She was inducted into the KU Hall of Fame in 2008.

Barb Francis - Attack (1975-79) Francis was a four-year starter and offensive team leader in the early days of KU women's lacrosse. She was the first Golden Bear to participate in the United States Women's Lacrosse Association All-Star Game. She was enshrined in the KU Hall of Fame in 1993.

Jane Geyer – Attack (1982-84) Geyer was a two-time All-American and is the second-leading goal scorer in program history with 127 goals. In 2000, she was named as one of the top female athletes of the 1980s, and was also inducted into the hall of fame.

Gwen Kerr – Goalkeeper (1986-89) Kerr holds the career record for saves with 747, and was inducted to the hall of fame in 1994.

Denise Long – Goalkeeper (1980-84) Long was a three-year starting goalie from 1981-84 and was named to the All-PSAC squad in both her junior and senior seasons. She was inducted into the hall of fame in 1989.

Donna Long – Defense (1981-85) The younger sister of fellow hall of famer Denise, Donna was a four-year starting defender and was All-PSAC in 1983. She was inducted into the hall in 2002.



Coaching / Year-by-Year Records

Head Coaching Records

Coach (Years)	Seasons	Overall				PSAC Games			
		W	L	T	Pct.	W	L	T	Pct.
Susan Miller (2)	1975-76	5	7	0	.417				
Veronica Lawson (1)	1977	9	5	1	.633				
Elaine Santo (1)	1978	7	3	2	.667				
Jocelyn Beck (6)	1979-84	44	25	6	.627	10	0	1	.955
Betty Wesner (6)	1985-90	31	43	0	.419	7	21	0	.250
Sarah Greer (5)	2008-12	16	61	0	.208	1	40	0	.024
Kate Scattergood (3)	2013-Present	8	41	0	.163	3	32	0	.086
Totals	24 Years	120	185	9	.396	21	93	1	.187

Year-by-Year Records

Year	Coach	All Games				PSAC Games				Notes
		W	L	T	Pct	W	L	T	Pct.	
1975	Susan Miller									Team played only three exhibition games
1976	Susan Miller	5	7		.417					First Varsity Season
1977	Veronica Lawson	9	5	1	.633					
1978	Elaine Santo	7	3	2	.667					
1979	Jocelyn Beck	5	6	1	.458					
1980	Jocelyn Beck	3	8	1	.292					
1981	Jocelyn Beck	4	5	2	.455					
1982	Jocelyn Beck	13	1	1	.900	4	0	1	.900	PSAC and State Champions
1983	Jocelyn Beck	10	3		.769					PSAC Championship Finalists - Lost in title game
1984	Jocelyn Beck	9	2	1	.792	6	0		.000	PSAC Championship Finalists -Lost in title game
1985	Betty Wesner	2	7		.222	2	2		.500	
1986	Betty Wesner	2	11		.154	0	5		.000	
1987	Betty Wesner	7	7		.500	2	5		.286	
1988	Betty Wesner	5	7		.417	1	5		.167	
1989	Betty Wesner	6	6		.500	2	4		.333	
1990	Betty Wesner	9	5		.643					
-	-	-	-	-		-	-	-		
2008	Sarah Greer	2	8	0	.200					
2009	Sarah Greer	2	14	0	.125	0	10	0	.000	
2010	Sarah Greer	3	14	0	.176	0	10	0	.000	
2011	Sarah Greer	5	12	0	.294	0	10	0	.000	
2012	Sarah Greer	4	13	0	.235	1	10	0	.091	Won first PSAC East game since reinstatement
2013	Kate Scattergood	3	14	0	.176	1	10	0	.091	
2014	Kate Scattergood	4	12	0	.250	2	10	0	.167	
2015	Kate Scattergood	1	15	0	.063	0	12	0	.000	
Totals		120	185	9	.396	21	93	1	.187	

Single-Game Records

Goals

No.	Name	Opponent	Year
7	Mary Ann Botto	Shippensburg	1982
	Margaret Daly	Glassboro	1988
	Lindsey Crits	Erskine	2010
6	Mary Anne Botto	Widener	1982
	Jane Geyer	two times	1984
	Maragaret Daly	two times	1984
	Nancey McDonal	Philadelphia Textile	1988
	Shelly Dawson	Widener	1989
	Rachel Mehaffey	Edinboro	2010
	Rachel Mehaffey	Converse	2011
	Kelsey Hogan	Erskine	2012
	Rosa Buffolino	Indiana (Pa.)	2012

Assists

No.	Name	Opponent	Year
6	Lisa Rawa	Widener	1989
5	Kim Irvine	Philadelphia Textile	1988

Goalkeeper Saves

No.	Name	Opponent	Year
31	Gwen Kerr	Shippensburg	1988
28	Erin Myers	East Stroudsburg	2009
25	Erin Myers	Millersville	2009
23	Alyson Iovacchini	Philadelphia	2008
22	Denise Long	West Chester	1982
20	JoAnn McLaughlin	West Chester	2011

Groundballs

No.	Name	Opponent	Year
10	Carrie Healey	Seton Hill	2009
	Megan Schwar	Seton Hill	2009
	Randy Vite	East Stroudsburg	2010
	Courtney O'Neill	Coker	2014
	Courtney O'Neill	Slippery Rock	2015
8	Amanda Steczak	Gerogian Court	2008
	Samantha Crist	Gannon	2009
	Janice Kinney	Edinboro	2009
	Ally Brehm	two times	2009
	Gina Carmina	Converse	2012
	Kelsey Hogan	Converse	2012
	Courtney O'Neill	Gannon	2014
7	Carrie Healey	Slippery Rock	2009
	JoAnn McLaughlin	Bloomsburg	2012
	JoAnn McLaughlin	Shippensburg	2012
	Randy Vite	Chestnut Hill	2013
	Jillian Spencer	Coker	2014
	JoAnn McLaughlin	Edinboro	2014
	Courtney O'Neill	Millersville	2015
	Courtney O'Neill	Shippensburg	2015

Caused Turnovers

No.	Name	Opponent	Year
9	Carrie Healey	Seton Hill	2008
8	Janice Kinney	Edinboro	2009
7	Carrie Healey	Seton Hill	2008
6	Rachel Mehaffey	two times	2009
	Courtney O'Neill	Bloomsburg	2014
	Courtney O'Neill	Georgian Court	2015
	Lauren Huggins	Gannon	2015
5	Janice Kinney	Slippery Rock	2009
	Samantha Crist	Gannon	2009
	Megan Schwar	Bloomsburg	2009
	Emily Savini	Shippensburg	2010
	Randy Vite	Millersville	2011
	Marisa Kalodner	Millersville	2012
	Jillian Spencer	Shepherd	2013
	Gina Carmina	Shippensburg	2013
	Courtney O'Neill	Coker	2014
	Courtney O'Neill	Lock Haven	2015



Single-Season Records



Goals

No.	Name	Year
60	Mary Anne Botto	1982
45	Lisa Rawa	1987
41	Rachel Mehaffey	2009
40	Rachel Mehaffey	2011
38	Margaret Daly	1998
37	Margaret Daly	1989
34	Jillian Spencer	2014
33	Sarah Gabriele	2015
32	Carrie Healey	2009

Assists

No.	Name	Year
29	Kim Irvine	1988
21	Kim Irvine	1987
18	Lisa Rawa	1989
	Karla Pitzner	1990
	Cathy Donnelly	1986
14	Carrie Healey	2008

Goalkeeper Saves

No.	Name	Year
239	Gwen Kerr	1987
235	Erin Myers	2009
202	Gwen Kerr	1988
199	JoAnn McLaughlin	2011
162	JoAnn McLaughlin	2014
158	JoAnn McLaughlin	2013
155	Gwen Kerr	1986
151	Gwen Kerr	1989

Note: The following records only include statistics after the program was re-established in 2008.

Groundballs

No.	Name	Year
62	Randy Vite	2011
59	Courtney O'Neill	2015
58	Randy Vite	2010
58	Courtney O'Neill	2014
54	Megan Schwar	2009
52	Merisa Kalodner	2012
51	Leeann Pica	2010
51	Carrie Healey	2009

Draw Controls

No.	Name	Year
47	Leeann Pica	2012
43	Carrie Healey	2009
41	Carrie Healey	2008
39	Courtney O'Neill	2015
38	Jillian Spencer	2014
35	Leeann Pica	2010
35	Lindsey Crits	2010

Caused Turnovers

No.	Name	Year
35	Rachel Mehaffey	2009
34	Courtney O'Neill	2015
33	Courtney O'Neill	2014
30	Marisa Kalodner	2011
30	Janice Kinney	2009
29	Marisa Kalodner	2012
28	Carrie Healey	2008



Career Records

Goals

No.	Name	Years
129	Lisa Rawa	1986-89
127	Jane Geyer	1982-84
118	Margaret Daly	1986-89
105	Rachel Mehaffey	2009-11
100	Jillian Spencer	2012-15
83	Leeann Pica	2009-12
73	Kim Irvine	1986-88
60	Mary Ann Botto	1979-82
55	Rosa Buffolino	2011-13
54	Carrie Healey	2008-09
50	Taylor Stone	2012-15
41	Gina Carmina	2010-13
36	Kelsey Hogan	2010-13
35	Emily Solt	2010-12
34	Jen Dunne	2010-11
33	Sarah Gabriele	2015-Present

Points

No.	Name	Years
162	Margaret Daly	1986-89
161	Lisa Rawa	1986-89
135	Rachel Mehaffey	2009-11
128	Kim Irvine	1986-88
127	Jane Geyer	1982-84
124	Jillian Spencer	2012-15
108	Leeann Pica	2009-12
79	Carrie Healey	2008-09
67	Rosa Buffolino	2011-13
62	Taylor Stone	2012-15

Assists

No.	Name	Years
55	Kim Irvine	1985-88
44	Margaret Daly	1986-89
32	Lisa Rawa	1986-89
30	Rachel Mehaffey	2009-11
25	Carrie Healey	2008-09
25	Leeann Pica	2009-12
24	Jillian Spencer	2012-15
17	Katie Fearheller	2010-13

Goalkeeper Saves

No.	Name	Years
747	Gwen Kerr	1986-89
604	JoAnn McLaughlin	2011-14
235	Erin Myers	2009
146	Karly Waltman	2010

Note: The following records only include statistics after the program was re-established in 2008.

Groundballs

No.	Name	Years
200	Randy Vite	2010-13
179	Leeann Pica	2009-12
151	JoAnn McLaughlin	2011-14
148	Megan Schwar	2009-12
123	Marisa Kalodner	2011-13
117	Courtney O'Neill	2014-Present
115	Jillian Spencer	2012-15
98	Kelsey Halligan	2012-15
95	Janice Kinney	2008-10
92	Emily Savini	2010-13
90	Carrie Healey	2008-09

Draw Controls

No.	Name	Years
143	Leeann Pica	2009-12
95	Jillian Spencer	2012-15
84	Carrie Healey	2008-09
76	Megan Schwar	2009-12
57	Emily Savini	2010-13
55	Randy Vite	2010-13
54	Janice Kinney	2008-10
53	Rachel Mehaffey	2009-11
53	Courtney O'Neill	2014-Present

Caused Turnovers

No.	Name	Years
83	Marisa Kalodner	2011-13
77	Randy Vite	2010-13
67	Courtney O'Neill	2014-Present
62	Rachel Mehaffey	2009-11
57	Janice Kinney	2008-10
55	Leeann Pica	2009-12
54	Carrie Healey	2008-09
50	Megan Schwar	2009-12
47	Jillian Spencer	2012-15

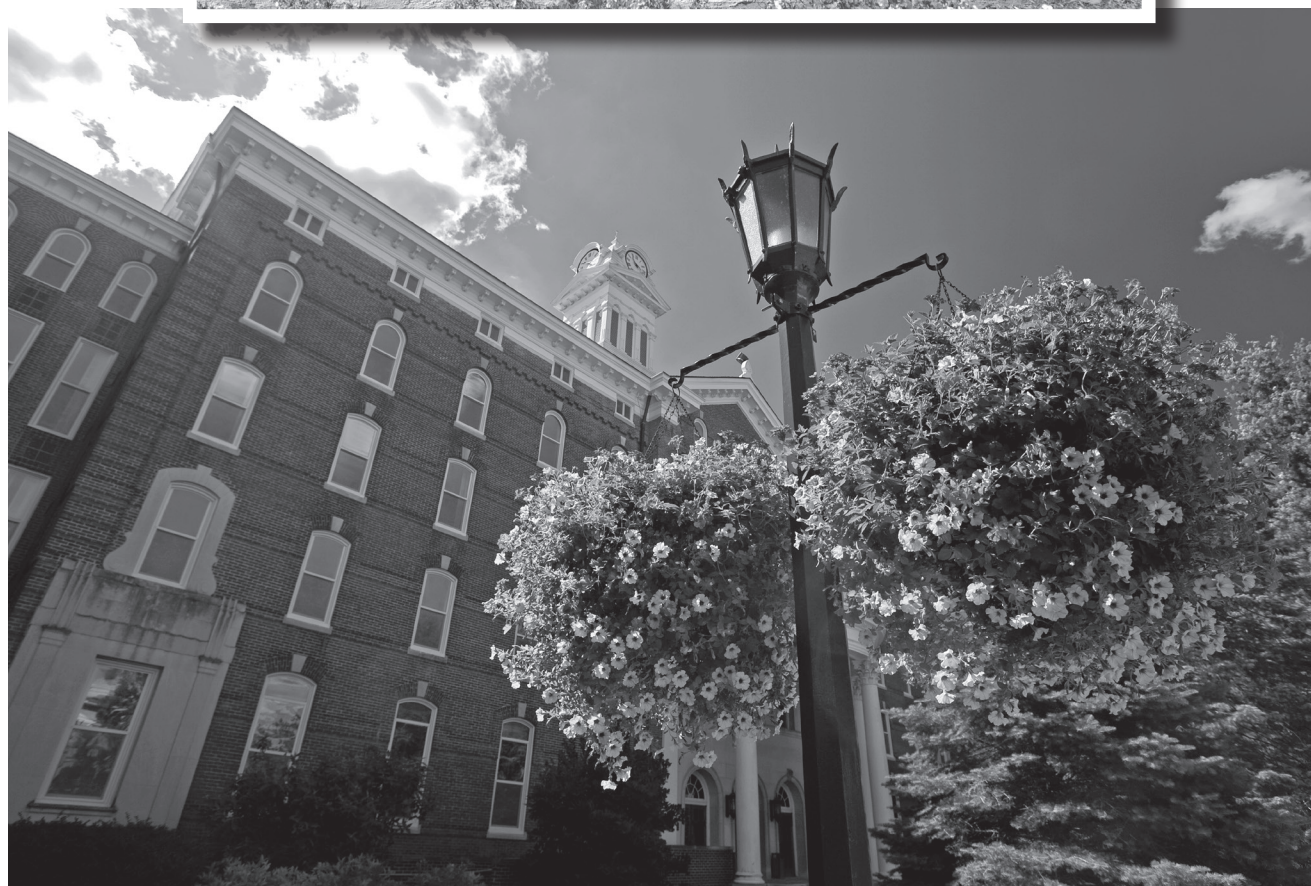
Games Played

No.	Name	Years
68	Randy Vite	2010-13
67	Leeann Pica	2009-12
65	Emily Savini	2010-13
65	Krystine Beodeker	2011-14
62	Katie Fearheller	2010-13
61	Megan Schwar	2009-12
61	Gina Carmina	2010-13
59	Jillian Spencer	2012-15
58	Justine Simonsen	2008-11
58	JoAnn McLaughlin	2011-14

Games Started

No.	Name	Years
65	Leeann Pica	2009-12
62	Randy Vite	2010-13
58	Justine Simonsen	2008-11
58	Emily Savini	2010-13
58	Jillian Spencer	2012-15
55	Krystine Beodeker	2011-14
53	Megan Schwar	2009-12
50	Taylor Stone	2012-15
48	Marisa Kalodner	2011-13

Kutztown University's Award-Winning Campus



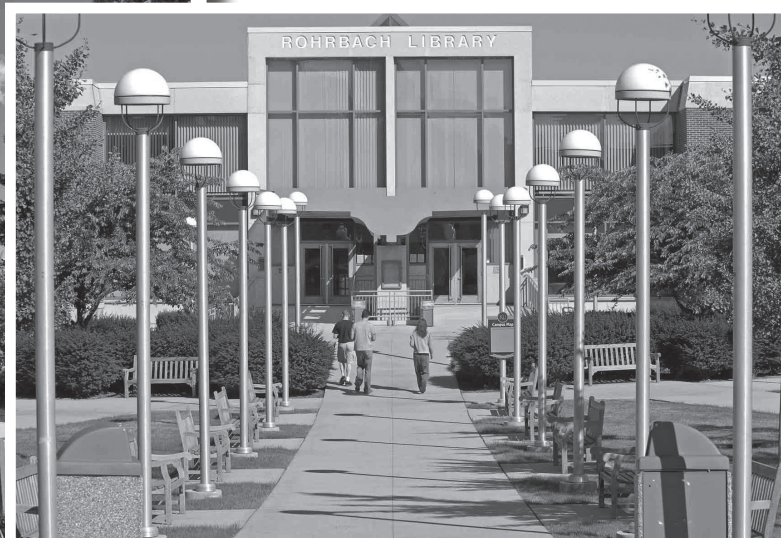
Kutztown University received national recognition for its beautiful landscape. KU's campus is set on 289 acres in bucolic Berks County.

Kutztown University's Award-Winning Campus



The Sharadin Arts Building (shown above) was renovated and expanded in 2008, and serves as the stage for the visual arts. The Alumni Plaza (pictured below) located next to the Graduate Center offers students a meeting place and space to reflect.

Kutztown University's Award-Winning Campus



Top: KU's mascot, the Golden Bear, grows in front of the Boehm Science Center. Graduate Center (bottom left) and Rohrbach Library (bottom right).



2016 SCHEDULE

MARCH

WED	2	HOLY FAMILY	3 PM
SUN	6	at Charleston (WV)	1 PM
MON	7	at Alderson Broadus	2 PM
SAT	12	at Chestnut Hill	12 PM
TUE	15	at Shippensburg *	4 PM
THU	17	LOCK HAVEN *	4 PM
SAT	19	at Gannon *	1 PM
WED	23	WEST CHESTER *	4 PM
SAT	26	at Mercyhurst *	11 AM
TUE	29	PHILADELPHIA U.	4 PM

APRIL

FRI	1	EDINBORO *	2 PM
SAT	2	SLIPPERY ROCK * (SENIOR DAY)	2 PM
WED	6	at Millersville *	4 PM
TUE	12	at East Stroudsburg *	4 PM
SAT	16	at Indiana (PA) *	1 PM
WED	20	BLOOMSBURG *	4 PM
FRI	22	SETON HILL *	1 PM
TUE	26-30	+ PSAC Championships	

MAY

SAT	14	+ NCAA First Round	
THU	19-21	+ NCAA National Championships (Denver, Colo.)	

All schedules are subject to change

Home games in **MAROON CAPS**

* PSAC game

+ if team qualifies



Kutztown University Athletics



@KUGoldenBears

For additional information:

Sports Information Office: (610) 683-4182

Athletics Department: (610) 683-4094

KUBEARS.COM

KUTZTOWN

1866 2016
KUTZTOWN
UNIVERSITY
Celebrating
150
YEARS

2016 MEDIA GUIDE